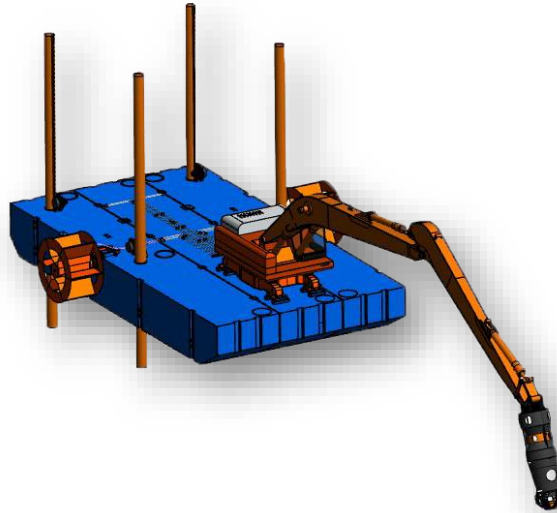


ATLANTIC MODULAR BARGE

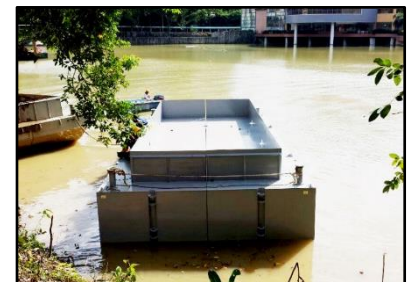
AMB 3000



The Atlantic Modular Barge AMB 3000 is a versatile watercraft designed for various marine applications. Its modular construction allows for easy assembly and disassembly, making it ideal for transportation and deployment in remote or restricted-access areas. With a sturdy construction and ample deck space, it offers stability and reliability for tasks such as material transportation during marine construction, dredging support, and offshore operations. The Atlantic Modular Barge provides flexibility and scalability for different project requirements, as multiple barges can be interconnected to form larger floating platforms for efficient marine operations.

AMB 3000 - Key Features:

- ✓ Designed to be containerized for easy land transportation.
- ✓ Modular design with interlocking system easy for site installation.
- ✓ 3-compartment pontoon design with reduced maintenance and operating costs.
- ✓ pontoons are constructed using an atmosphere corrosion-resistant plate.
- ✓ 16 m Long reach arm with multiple attachments.
- ✓ Self-propelled paddle wheel/thruster powered by the hydraulic excavator.
- ✓ All-round visibility for the Machine Operator.
- ✓ Easy control of all functions from the safety of the Operator Cabin.



* Modular Barge * Floating Pontoon * Sectional Barge * Water Excavator * Amphibious Dredger * Floating Excavator *



ATLANTIC MODULAR BARGE - SPECIFICATIONS

Machine Type	Modular Barge
Excavator Class	30 Ton Class
Max. Digging Reach	16,000 mm
Max. Digging Height	15,510 mm
Max. Digging Depth	11,560 mm
Max. Bucket Capacity	0.9 m ³ / 1.8 m ³
Ballast Water Capacity	21,650 kg
Stabilizer Spuds	4 Nos. x 9 m long
Spud Dimension	324 (OD) x 9,000 (L) mm
Propulsion	2 Nos. of Paddle Wheel
Min. Swing Radius	3,500 mm
Float Capacity	111 m ³
Design Waterline	1,160 mm
Total Weight	58,500 kg
Barge Dimensions (L x B x H)	11,980 x 6,302 x 1,500 mm

* All data is based on experience and dependent on the materials used. Machine design and construction are subject to technical modifications and upgrades.
** All dimensions are without side pontoons, or spuds and are based on a 16 m long reach arm.

AMB 3000 - Applications:

- ✓ Bridge construction.
- ✓ Marine construction.
- ✓ Shoreline restoration.
- ✓ Dredging and silt removal.
- ✓ Underwater pipeline installation.
- ✓ Flood control.
- ✓ Island construction.
- ✓ Emergency response.
- ✓ Harbour maintenance.
- ✓ Environmental remediation.



DELIVERING MORE EFFICIENCY, FLEXIBILITY AND POWER



ACE CENTRO ENTERPRISES

P. O. Box 95325, Abu Dhabi - U.A.E.

T : +971 2 6737900

E : salesteam@acecentro.com W : www.acecentro.com

